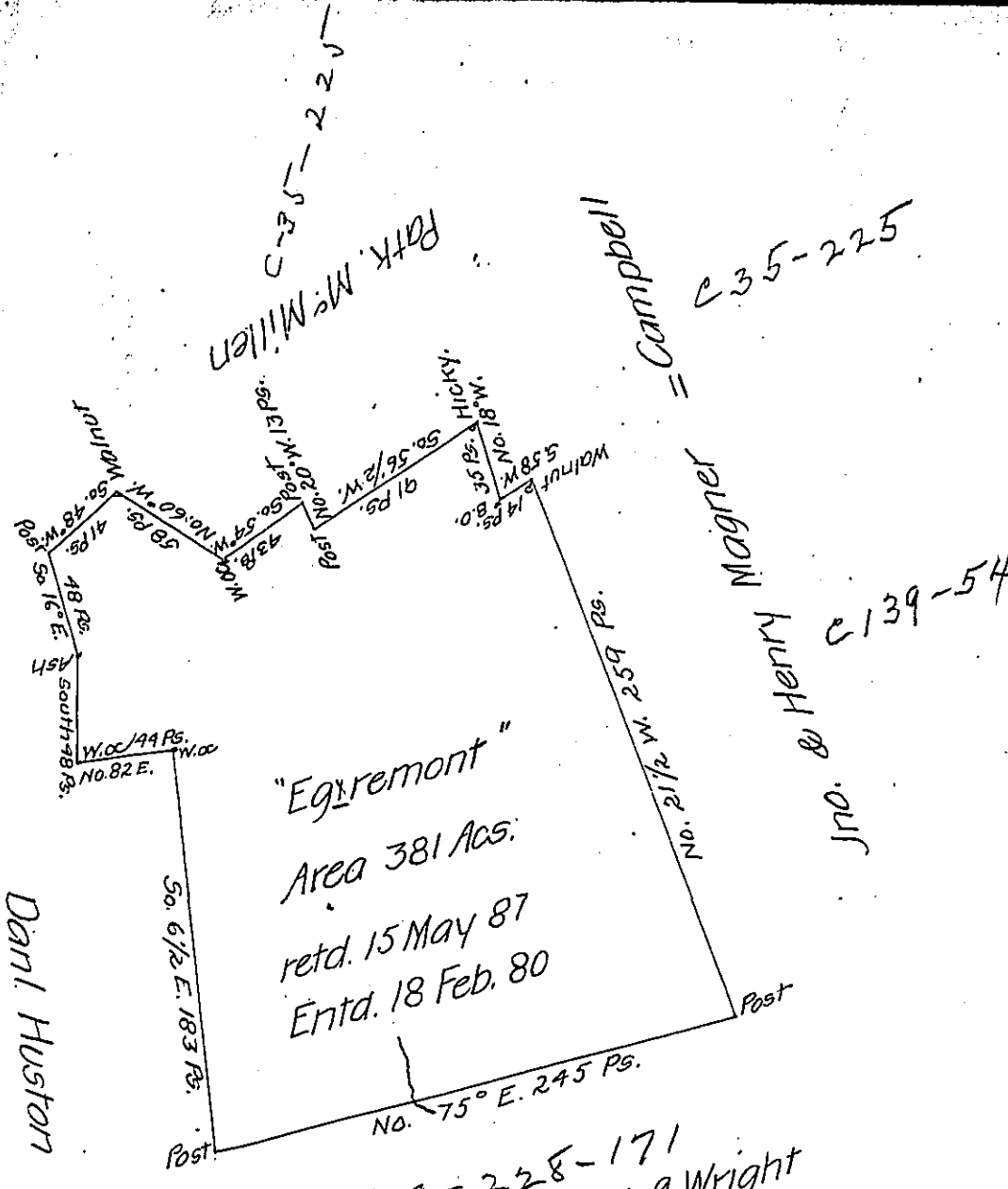


29-28-2
DANI TOWNSEND



A Draught of a survey called "Egremont" situate on Peters Cr.

in Washington County, contg 381 Acs. strict measure, executed July ye 6th 1786 for the Heirs of Josh. Wright in consequence of a Certift for 400 acs. granted to sd Wright by the Commissrs. appointed by Virg. to adjust the claims to unpatented Lands in ye Counties Monong. Volig. and Ohio & duly entered &c.

Pres. Nevill }
Mattw. Ritchie } D.Ss.

Jno. Lukens Esqr. S.Gl.

IN TESTIMONY that the above is a copy of the original remaining on file in the Department of Internal Affairs of Pennsylvania, made conformably to an Act of Assembly approved the 16th day of February, 1833, I have hereunto set my Hand and caused the Seal of said Department to be affixed at Harrisburg, this twenty-first day of March 1907

Lea C. D. Brown
Secretary of Internal Affairs.